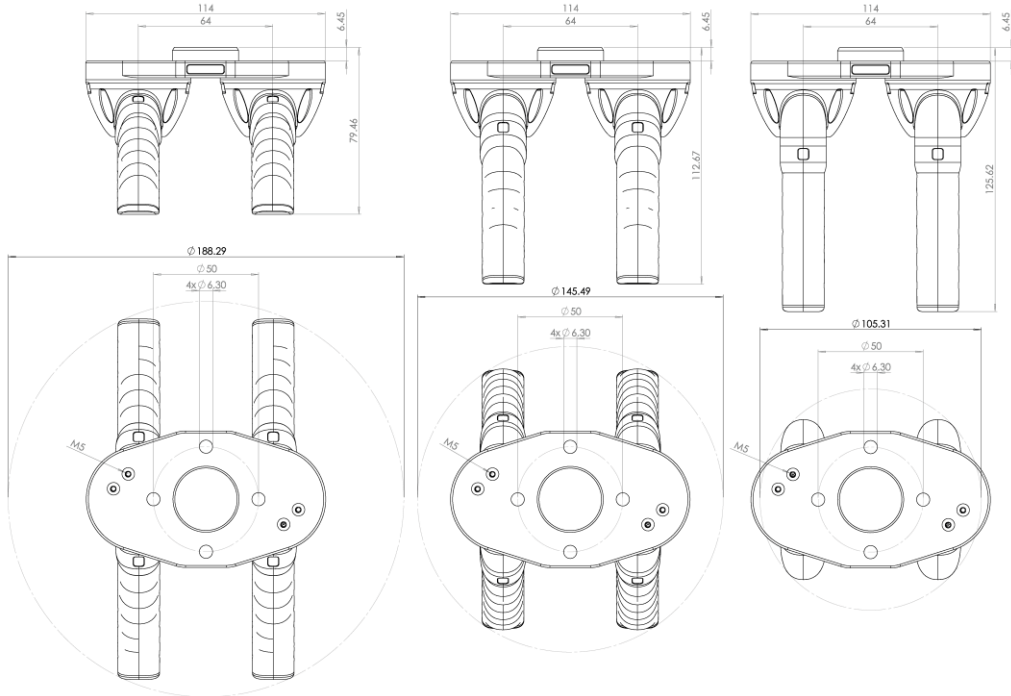


Connector	30° Cone Angle	60° Cone Angle	90° Cone Angle
ISO 9404-1-31.5-2-M5	 SG.D.4P.30D.31	 SG.D.4P.60D.31	 SG.D.4P.90D.31
ISO 9409-1-40-4-M6	 SG.D.4P.30D.40	 SG.D.4P.60D.40	 SG.D.4P.90D.40
ISO 9409-1-50-4-M6	 SG.D.4P.30D.50	 SG.D.4P.60D.50	 SG.D.4P.90D.50
Typical Gripping Objects	<ul style="list-style-type: none"> <li>• Rectangular or Cubic</li> <li>• Feed size 55 mm – 140 mm</li> <li>• Weight &lt; 400 g</li> </ul>	<ul style="list-style-type: none"> <li>• Rectangular or Cubic</li> <li>• Feed size 15 mm – 115 mm</li> <li>• Weight &lt; 400 g</li> </ul>	<ul style="list-style-type: none"> <li>• Rectangular or Cubic</li> <li>• Feed size 5 mm – 40 mm</li> <li>• Weight &lt; 400 g</li> </ul>



# 4 Finger Parallel SoftGripper - Developer

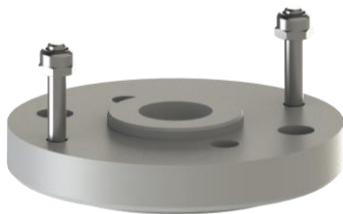
Cone Angle 30°, 60° & 90°



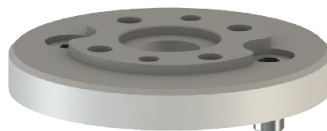
Finger Material	Silicone
Operating Pressure	- 0.5 to 1.0 bar
Grip Force per Finger	5 N
Durability	> 10 Mio. Cycles @1.0 bar, 0.5 Hz
Connector <sup>1</sup>	ISO 9404-1-31.5-2-M5
Air Pressure Connection	2 x M3
Total Height 30° 60° 90°	79,46 112,67 125,62 mm
Total Diameter 30° 60° 90°	188,29 145,49 105,31 mm
Mass	383 g

<sup>1</sup> Other connectors available, e.g. ISO 9409-1-50-4-M6 for Universal Robots.

## Available SoftGripper Adapters



RBX Delta Robot Connector  
SG.C.31.NE.17



ISO 9409-1-40-4-M6 Connector  
SG.C.31.40



ISO 9409-1-50-4-M6 Connector  
SG.C.31.50