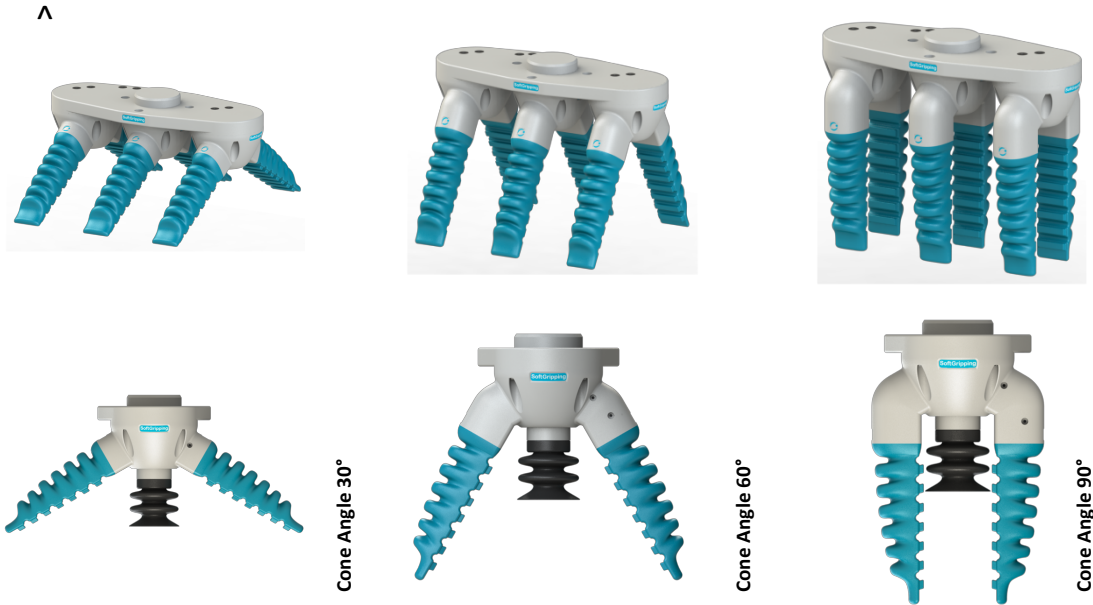


# 3x2 Finger Soft Gripper

Cone Angle 30°, 60° & 90°

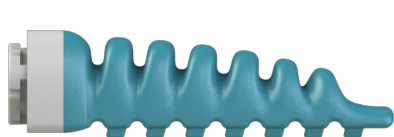


## Typical Gripping Objects

- Rectangular or Cubic
- Feed size 55 mm – 140 mm
- Weight <600 g
- Rectangular or Cubic
- Feed size 15 mm – 115 mm
- Weight <600 g
- Rectangular or Cubic
- Feed size 5 mm – 40 mm
- Weight <600 g

Finger Material	Silicone
Operating Pressure	- 0.5 to 1.0 bar
Grip Force per Finger	3,5 N
Durability	> 1 Mio. Cycles @1.0 bar, 0.5 Hz

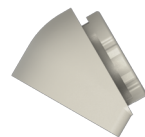
## Elements of the Soft-Gripping Construction Kit



6 x Finger Shore A60



3 x 2 Finger Gripper Base



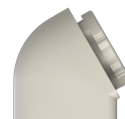
6 x 60° Angle Adapter



1 x 3 Finger Parallel Gripper Base



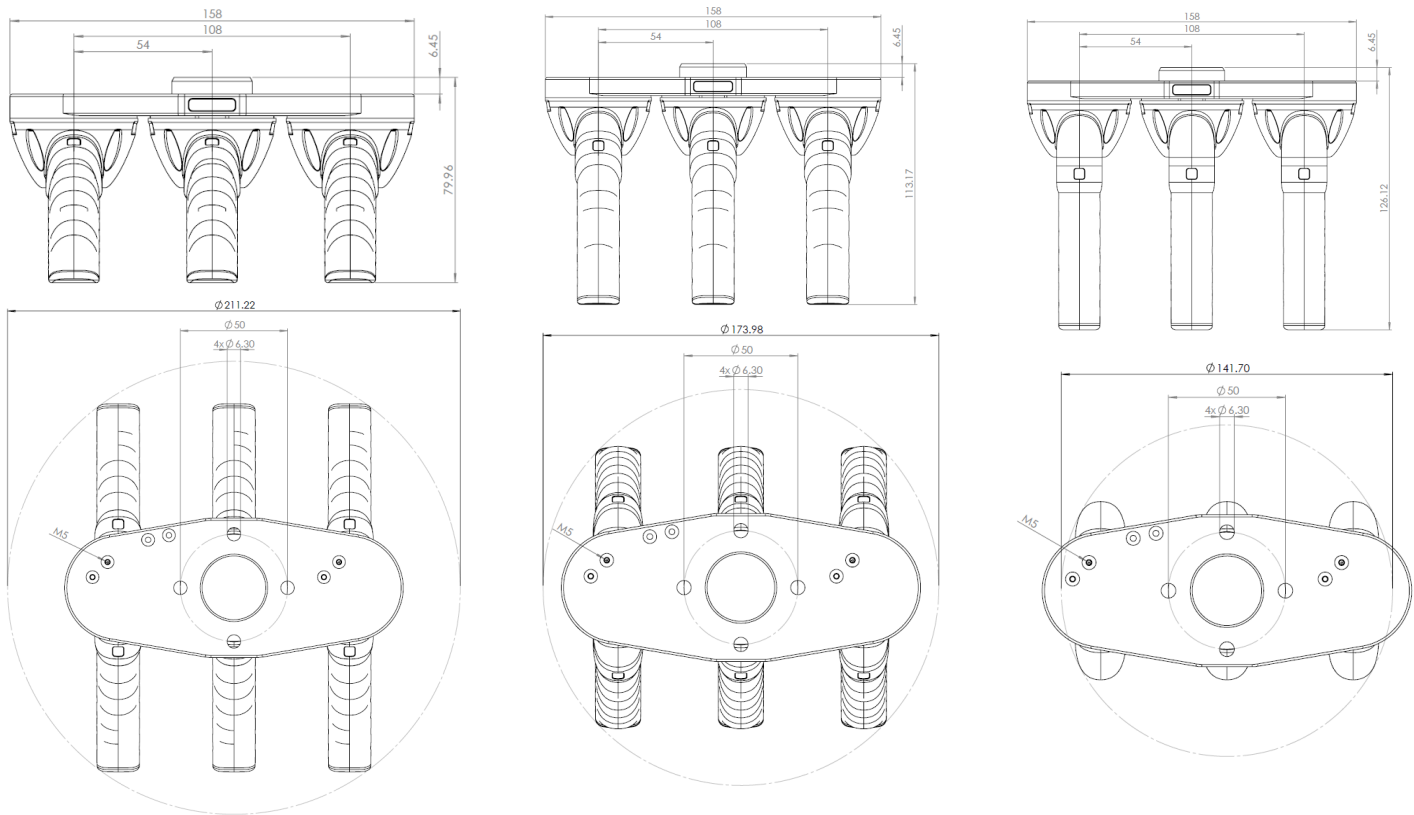
3 x Vacuum Suction Cup  
(optional accessory)



6 x 90° Angle Adapter

# 3x2 Finger Soft Gripper

30°, 60° & 90° Cone Angle



Connector <sup>1</sup>	ISO 9409-1-50-4-M6
Air Pressure Connection	6 x M5
Total Height 30°   60°   90°	79,96   113,17   126,12 mm
Total Diameter 30°   60°   90°	211,22   173,98   141,70 mm
Mass	573,51 g

<sup>1</sup> Suitable for UR-Robots. Other connectors available.